

How to get IPs on Steam



Written by Blubex

(This username is used by me only on Hack Forums. Not anywhere else)

(AKA Fattenedcow, [HL] Fattenedcow)

This was tested on a friend by his own free will.

This person was not harmed in the making of this Ebook

Table of contents

Page 1- Cover Page

Page 2- Table Of Contents

Page 3- How this book is organized

Page 3- About me

Page 3- **IMPORTANT**

Page 4- CommView Part

Page 5- Using CommView to get IPs

Page 6- Wireshark

Page 7-Wireshark (Cont)

Page 8- What am I supposed to do with his IP?

Page 9- FAQ

How this book is organized

The first part of this book will be focusing on the Commview part because that is the most simple way to get an IP off of steam. The second part will be focused on using Wireshark to get people's IPs.

About me

I am just a skid trying to become a hacker like most of you. I am also trying to give back to the HackForums Community. Honestly I don't know much about hacking however I did learn a lot after joining HF and taking a look around. While I was looking I found out how to get IPs off of Steam really easily. However, these required CommView which only has a 30 Day trial before it becomes unusable. After doing some research I found a crack for CommView that is very easy to install. However, I've found that some people can't use CommView at all, or prefer another packet sniffer like Wireshark. After Searching on HF I couldn't find a tutorial. So, I decided to do some experimenting. By using the same steps to find IPs on CommView, I was able to retrieve an enemy's IP. So from a skid to a skid (or a 1337 H4X0R depending on who you are) Here is my simple process to get IPs on steam.

IMPORTANT

Make sure that you have friended your victim on Steam before you start! Otherwise THIS WILL NOT WORK! To get their IP, you have to be able to voice chat with them and before you are able to do that, you have to friend them.

Tips on getting someone to friend you

Example: You are playing on a TF2 server and an very annoying person (not necessarily a kid) comes on and says something in their really annoying high pitched nasal pre-pubescent voice, and starts raging at every kill or death he gets every two seconds. Then he starts to troll (in a series of unsuccessful attempts) everyone on the server. First, friend request them, then on the in-game chat, tell him something like, "Hey (victim's name) I just friend requested you, can you accept?" If they don't answer just ask again until they respond something. He may ask why you are friend requesting him. Tell him you think he is really hilarious, or something like that. That flattery usually works on most people. If he friend requests, Good job, the hard work is now over. (Not so hard, right?)

Part 1: CommView

You should have already downloaded and installed CommView by now (if not the link is provided below)

<http://www.tamos.com/bitrix/redirect.php?event1=download&event2=commview&event3=cv6&goto=/files/cv6.zip>

Now, to get the full version of CommView, Download this file below with a Virus Scan Link

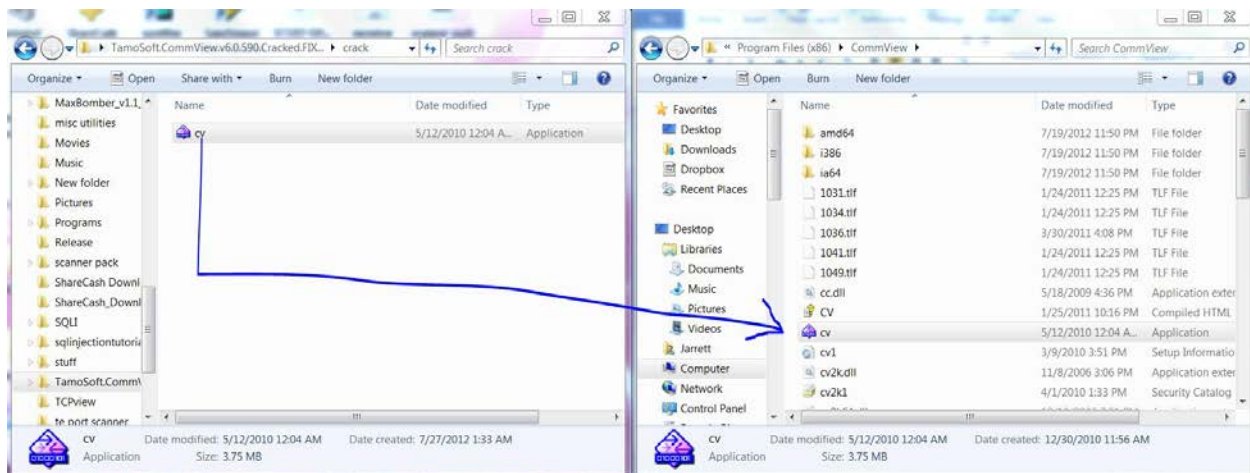
<http://adf.ly/BCMG0>

Virus Scan

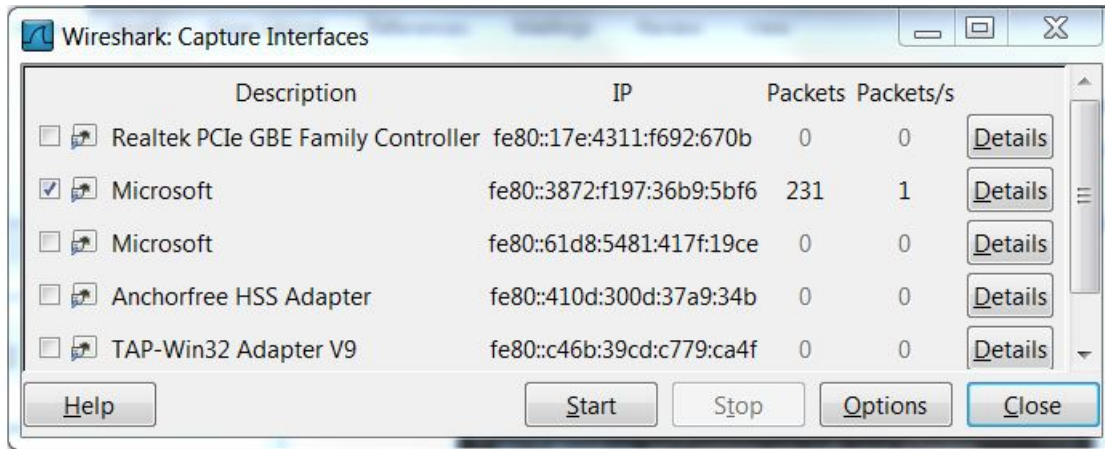
<https://www.virustotal.com/file/859dc00a10c0b11e0c2bd92b5c018b9c05ff33e3039719e9645ddc41a5f77266/analysis/>

To install the crack go into your CommView Program Files and replace drag the CV into that and replace the current one with it.

Path C:\Program Files (x86)\Common Files



There you go! CommView is now cracked and ready to use!



Using CommView to get IPs

Now that you've cracked CommView, open it up. If not already selected, select "Wireless Network Connection".



Now you are ready to capture packets. Now click the Play Button to start capturing. A few (or possibly a lot) of IPs will probably show up. If a lot of IPs pop up try stopping all loading pages and downloads because you will be receiving IPs and Packets from those sites and that may confuse you from the IP that you really want.

Now go into steam and pull up a steam chat of your victim. Next click "Start Voice Chat" so you can get a direct connection with him. Now look at your CommView window. A new IP should have come up. That is the IP of your victim.

You may ask, "How can I tell which IP is his?"

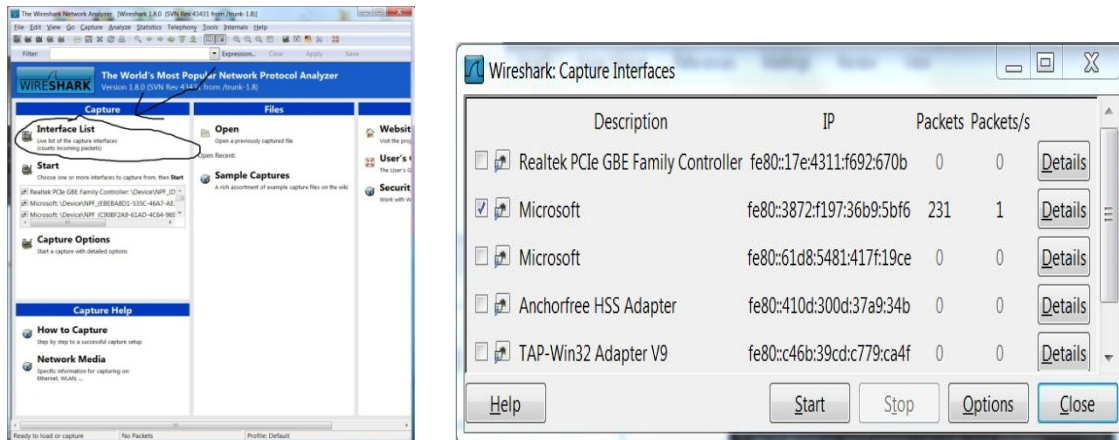
The answer is simple, his IP is the one that has the same amount of packets going IN than it does going OUT

Part 2: Wireshark

Wireshark is a free packet sniffer but is a little bit more complicated to use for getting an IP on steam.

Setup

First, download and install Wireshark. Then open it up. Then click on Interface List.



This is a list of wireless adapters (I think) that you can choose from. You should choose the one that has packets going in and out. If you don't have any packets going in or out, try doing a Google search while keeping an eye on the adapters to see if the number of packets goes up.

Now press Start Capture.

No.	Time	Source	Destination	Protocol	Length	Info
6449	47.665842000	Cisco_d9:24:c01	Spamming-tree-(far-br)0x3000	68 Etf		
6450	47.679589000	10.61.33.111	10.61.33.111	CLASSIC-	98 Mes	
6451	47.679672000	10.61.33.111	10.61.33.111	CLASSIC-	110 Mes	
6452	47.925773000	10.61.33.111	10.61.33.111	CLASSIC-	98 Mes	
6453	48.016915000	10.61.33.202	10.61.33.111	CLASSIC-	110 Mes	
6454	48.177289000	10.61.33.202	10.61.33.255	MDNS	92 Mes	
6455	48.382763000	10.61.33.112	224.0.0.251	MDNS	313 St	
6456	48.383243000	fe80::7661:b6ff:fe1f:ff02::fb	mdns	333 St		
6457	48.414847000	10.61.33.111	10.61.33.111	CLASSIC-	98 Mes	
6458	48.479787000	10.61.33.111	255.255.255.255	UDP	47 Sou	
6459	48.484888000	10.61.33.244	255.255.255.255	UDP	114 Sou	
6460	48.479787000	10.61.33.111	255.255.255.255	UDP	46 Sou	

Now you might be hit with a seizure of rainbows, or a sea of light blue or green. Ignore those.

Now you should go into steam and call your victim. Don't worry, you don't have to have a mic. You also don't need to actually talk to the guy. Just say that you want to test out your new mic, and before your old mic broke, tell them that every time you tested it, people made fun of your voice or something like that

Once you have called them, wait a few seconds, then stop the call. Look at the packets and look for something that says CLASSIC- under the protocol tab. If there are multiple CLASSIC- Protocol packets, Look for the IP that appears the most. If It starts with 10 point something, ignore that. It's most likely your Internal IP. Also, if it begins with 192.168, ignore it.

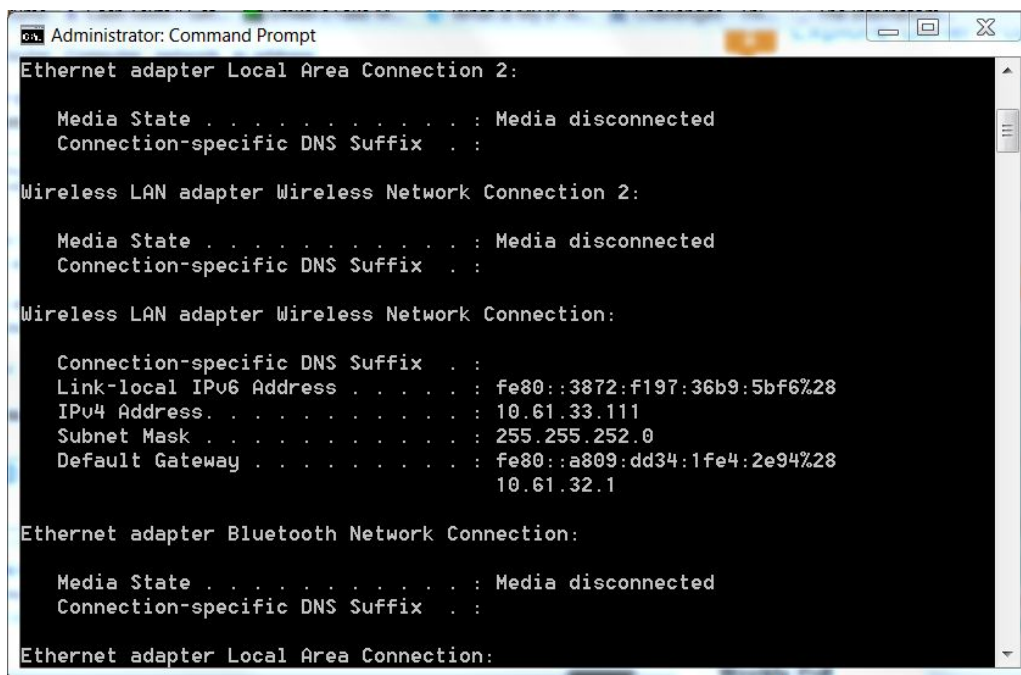
To find out what your internal IP address is for sure, go into cmd, and type

Ipconfig

Then scroll up to where it says Wireless LAN adapter Wireless Network Connection

Your internal ip is the IPv4. : 10.61.33.111

Your internal IP won't be that

A screenshot of a Windows Command Prompt window titled "Administrator: Command Prompt". The window displays the output of the 'ipconfig' command. It shows details for three network adapters: Ethernet adapter Local Area Connection 2 (Media State: Media disconnected), Wireless LAN adapter Wireless Network Connection 2 (Media State: Media disconnected), and Wireless LAN adapter Wireless Network Connection (Media State: Media disconnected). The 'Wireless LAN adapter Wireless Network Connection' section is expanded, showing the following details: Connection-specific DNS Suffix, Link-local IPv6 Address (fe80::3872:f197:36b9:5bf6%28), IPv4 Address (10.61.33.111), Subnet Mask (255.255.252.0), and Default Gateway (fe80::a809:dd34:1fe4:2e94%28, 10.61.32.1). Below this, it shows details for Ethernet adapter Bluetooth Network Connection (Media State: Media disconnected) and Ethernet adapter Local Area Connection (Media State: Media disconnected).

```
Administrator: Command Prompt
Ethernet adapter Local Area Connection 2:

    Media State . . . . . : Media disconnected
    Connection-specific DNS Suffix  . :

Wireless LAN adapter Wireless Network Connection 2:

    Media State . . . . . : Media disconnected
    Connection-specific DNS Suffix  . :

Wireless LAN adapter Wireless Network Connection:

    Connection-specific DNS Suffix  . :
    Link-local IPv6 Address . . . . . : fe80::3872:f197:36b9:5bf6%28
    IPv4 Address. . . . . : 10.61.33.111
    Subnet Mask . . . . . : 255.255.252.0
    Default Gateway . . . . . : fe80::a809:dd34:1fe4:2e94%28
                                10.61.32.1

Ethernet adapter Bluetooth Network Connection:

    Media State . . . . . : Media disconnected
    Connection-specific DNS Suffix  . :

Ethernet adapter Local Area Connection:
```

Notice: If you look at the tabs at the top of the packet capture, you will see something that says

No. |Time |Source |Destination |Protocol etc...

If you look at the Source and Destination tabs, those are the places you will see the IPs

What Am I supposed to do with his IP?

Well for one you can go on a Whois website to find information about them, for example, Approximate Location, (Country, State/Region, City to a certain extent)

A Possible name, Hostname, ISP, Organization, Services, Whether or not his IP is a proxy or not, Type (example: broadband) and assignment (for example: Dynamic IP/Static IP)

Next you can possibly DoS/DDoS him if you have a good host booter. As a skid, I'm not totally sure what you can really do with a person's IP.

Here's a list of a few

<http://whatismyipaddress.com>

<http://geobytes.com/IpLocator.htm?GetLocation>

FAQ

Q: How can I be sure I have the right person's IP?

A: Using the Whois website, you can find out his location. You should ask where he lives. For example, say something like,

"Hey what state do you live in?"

"I live in (state you don't really live in) by the way."

He will most likely tell you because you told him the information first.

Q: Will I get VAC banned for doing this?

A: No, basically all you have been doing is calling the person. It isn't illegal to simply use a packet sniffer.

Q: How can I avoid this happening to me?

A: Instead of having random people add you, try to actually make friends with them back. If you accept a random call from them, and it turns out they were trying to get your IP you can always find his whenever you want. Then you can really relate to them and make real friends with them instead of enemies.